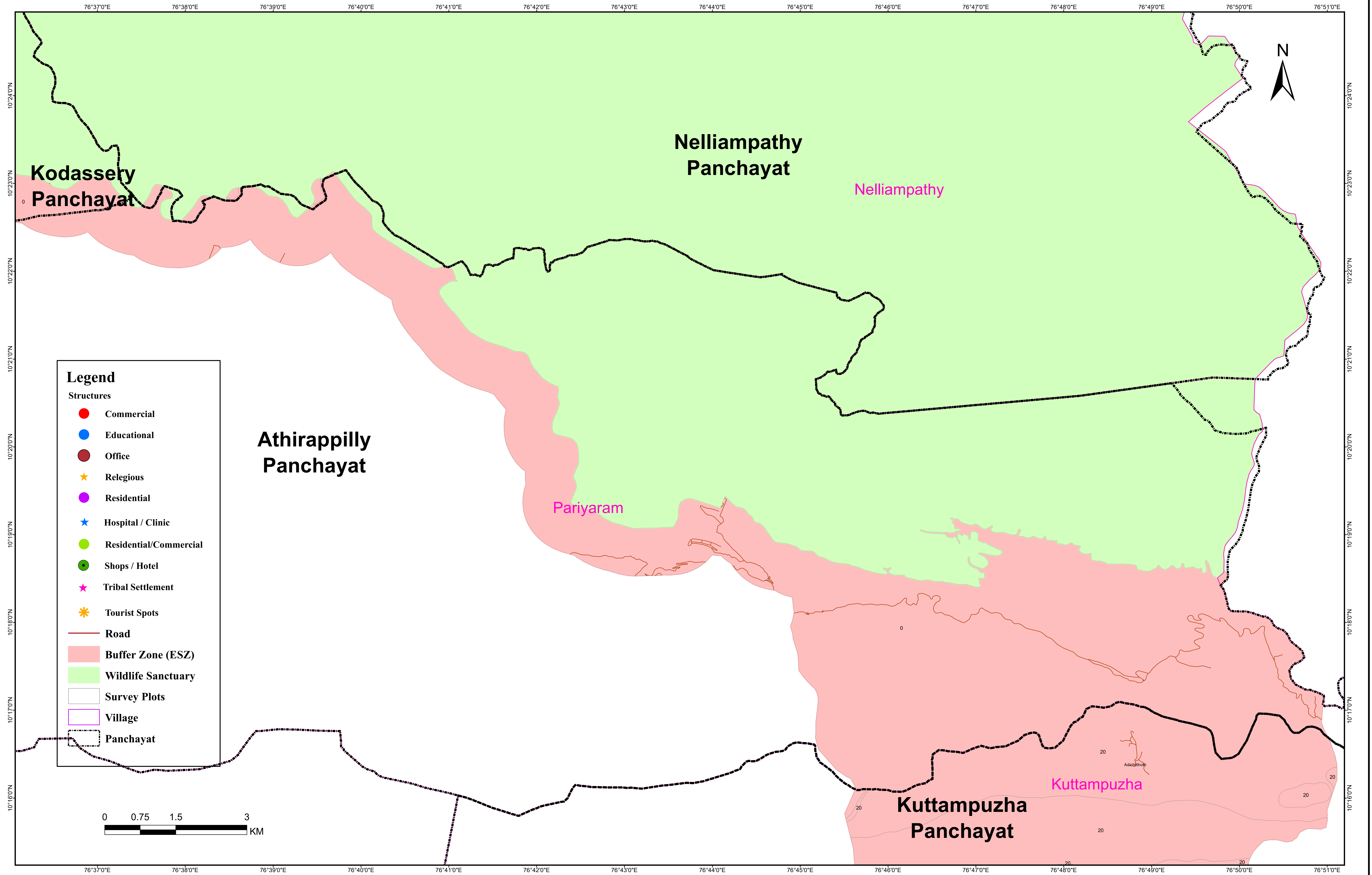


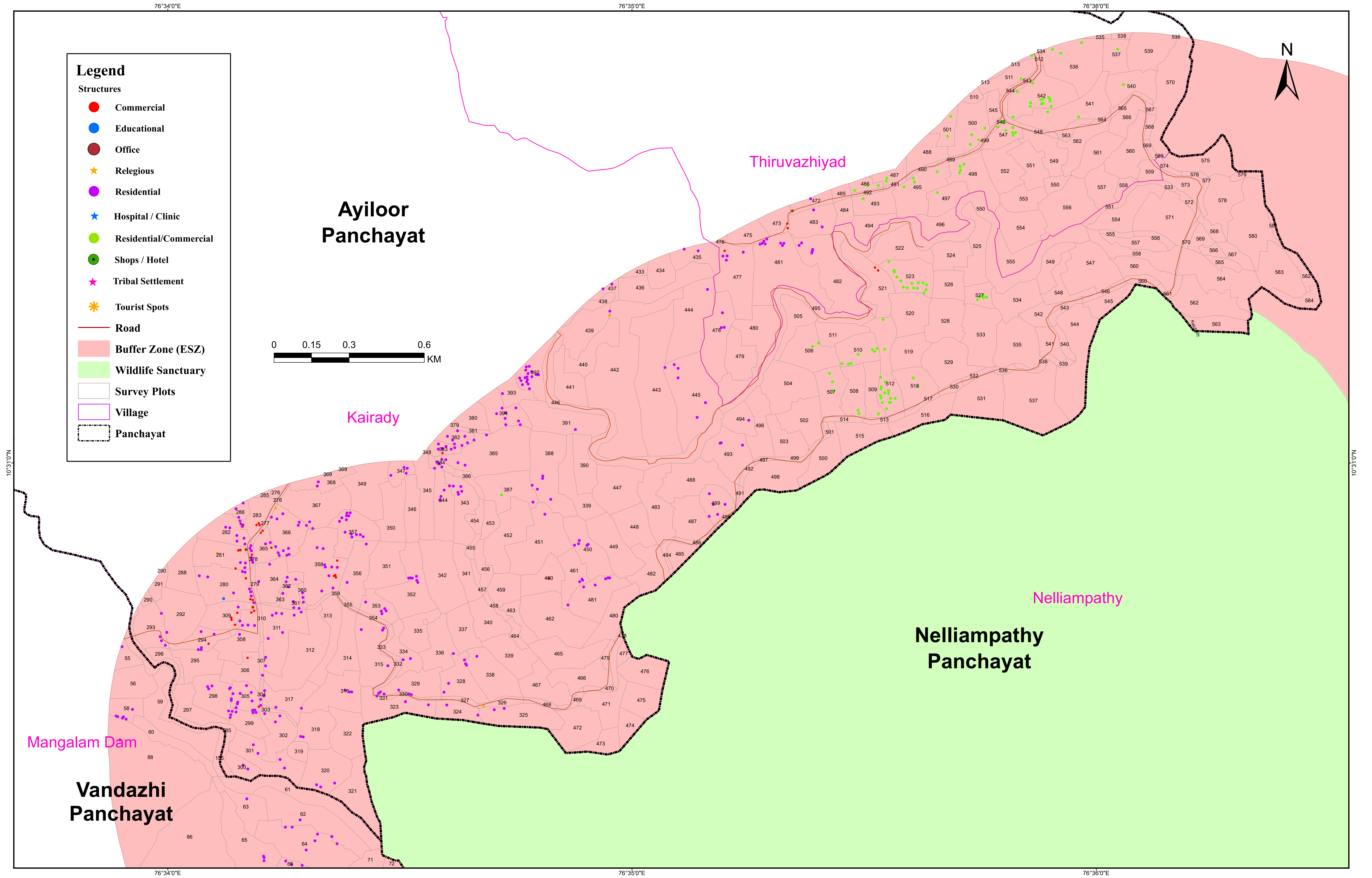
# PARAMBIKULAM WILD LIFE SANCTUARY

## SUBSISTING STRUCTURES - ATHIRAPALLY PANCHAYAT



# PARAMBIKULAM WILD LIFE SANCTUARY

## SUBSISTING STRUCTURES - AYILOOR PANCHAYAT



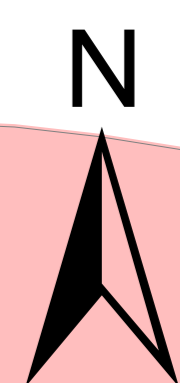
**Legend**

**Structures**

- Commercial
- Educational
- Office
- ★ Religious
- Residential
- ★ Hospital / Clinic
- Residential/Commercial
- Shops / Hotel
- ★ Tribal Settlement
- ★ Tourist Spots

**Other Features**

- Road
- Buffer Zone (ESZ)
- Wildlife Sanctuary
- Survey Plots
- Village
- Panchayat



**Ayiloor  
Panchayat**

Thiruvazhiyad

Kairady

Nelliampathy

**Nelliampathy  
Panchayat**

Mangalam Dam

**Vandazhi  
Panchayat**

76°34'0"E

76°35'0"E

76°36'0"E

76°34'0"E

76°35'0"E

76°36'0"E

10°31'0"N

10°31'0"N

**Survey Plots within the ESZ of Parambikulam WLS-  
Palakkad District, Chittur Taluk, Ayiloor Panchayat**

<b>Village</b>	<b>Block No</b>	<b>Survey Plots</b>	<b>Plots falls in ESZ</b>
Kairady	52	276	Partial
	52	276	Partial
	52	277	Full
	52	278	Full
	52	279	Full
	52	280	Full
	52	281	Full
	52	282	Partial
	52	283	Full
	52	285	Partial
	52	286	Partial
	52	288	Partial
	52	290	Partial
	52	291	Partial
	52	292	Full
	52	293	Full
	52	294	Full
	52	295	Full
	52	296	Full
	52	297	Full
	52	298	Full
	52	299	Full
	52	300	Full
	52	301	Full
	52	302	Full
	52	303	Full
	52	304	Full
	52	305	Full
	52	306	Full
	52	307	Full
	52	308	Full
	52	309	Full
	52	310	Full
	52	311	Full
	52	312	Full
	52	313	Full
	52	314	Full
	52	315	Full

	52	316	Full
	52	317	Full
	52	318	Full
	52	319	Full
	52	320	Full
	52	321	Full
	52	322	Full
	52	323	Full
	52	324	Full
	52	325	Full
	52	326	Full
	52	327	Full
	52	328	Full
	52	329	Full
	52	330	Full
	52	331	Full
	52	332	Full
	52	333	Full
	52	334	Full
	52	335	Full
	52	336	Full
	52	337	Full
	52	338	Full
	52	339	Full
	52	339	Full
	52	340	Full
	52	341	Full
	52	342	Full
	52	343	Full
	52	344	Full
	52	345	Partial
	52	346	Full
	52	347	Partial
	52	348	Partial
	52	349	Partial
	52	350	Full
	52	351	Full
	52	352	Full
	52	353	Full
	52	354	Full
	52	355	Full
	52	356	Full
	52	357	Full
	52	358	Full

	52	359	Full
	52	360	Full
	52	361	Full
	52	362	Full
	52	363	Full
	52	364	Full
	52	365	Full
	52	366	Full
	52	367	Full
	52	368	Partial
	52	369	Partial
	52	379	Partial
	52	380	Partial
	52	381	Full
	52	382	Partial
	52	383	Partial
	52	384	Full
	52	385	Full
	52	386	Full
	52	387	Full
	52	388	Full
	52	390	Full
	52	391	Full
	52	392	Partial
	52	393	Partial
	52	394	Full
	52	433	Partial
	52	434	Partial
	52	435	Partial
	52	436	Full
	52	437	Partial
	52	438	Partial
	52	439	Full
	52	440	Full
	52	441	Full
	52	442	Full
	52	443	Full
	52	444	Full
	52	445	Full
	52	446	Partial
	52	447	Full
	52	448	Full
	52	449	Full
	52	450	Full

	52	451	Full
	52	452	Full
	52	453	Full
	52	454	Full
	52	455	Full
	52	456	Full
	52	457	Full
	52	458	Full
	52	459	Full
	52	460	Full
	52	461	Full
	52	462	Full
	52	463	Full
	52	464	Full
	52	465	Full
	52	466	Full
	52	467	Full
	52	468	Full
	52	469	Full
	52	470	Full
	52	471	Full
	52	472	Full
	52	473	Full
	52	474	Full
	52	475	Full
	52	476	Full
	52	477	Full
	52	478	Full
	52	479	Full
	52	480	Full
	52	481	Full
	52	482	Full
	52	483	Full
	52	484	Full
	52	485	Full
	52	486	Full
	52	487	Full
	52	488	Full
	52	489	Full
	52	490	Full
	52	491	Full
	52	492	Full
	52	493	Full
	52	494	Full

	52	495	Full
	52	496	Full
	52	497	Full
	52	498	Full
	52	499	Full
	52	500	Full
	52	501	Full
	52	502	Full
	52	503	Full
	52	504	Full
	52	505	Full
	52	506	Full
	52	507	Full
	52	508	Full
	52	509	Full
	52	510	Full
	52	511	Full
	52	512	Full
	52	513	Full
	52	514	Full
	52	515	Full
	52	516	Full
	52	517	Full
	52	518	Full
	52	519	Full
	52	520	Full
	52	521	Full
	52	522	Full
	52	523	Full
	52	524	Full
	52	525	Full
	52	526	Full
	52	527	Full
	52	528	Full
	52	529	Full
	52	530	Full
	52	531	Full
	52	532	Full
	52	533	Full
	52	533	Full
	52	534	Full
	52	535	Full
	52	536	Full
	52	537	Full

	52	538	Full
	52	539	Full
	52	540	Full
	52	541	Full
	52	542	Full
	52	543	Full
	52	544	Full
	52	545	Full
	52	546	Full
	52	547	Full
	52	548	Full
	52	549	Full
	52	550	Full
	52	551	Full
	52	554	Full
	52	555	Full
	52	556	Full
	52	557	Full
	52	558	Full
	52	560	Full
	52	560	Full
	52	561	Full
	52	562	Full
	52	563	Full
	52	564	Full
	52	565	Full
	52	566	Full
	52	567	Full
	52	568	Full
	52	569	Full
	52	570	Full
	52	571	Full
	52	572	Full
	52	573	Full
	52	574	Full
	52	575	Full
	52	576	Full
	52	577	Full
	52	578	Full
	52	579	Full
	52	580	Full
	52	581	Full
	52	582	Full
	52	583	Full



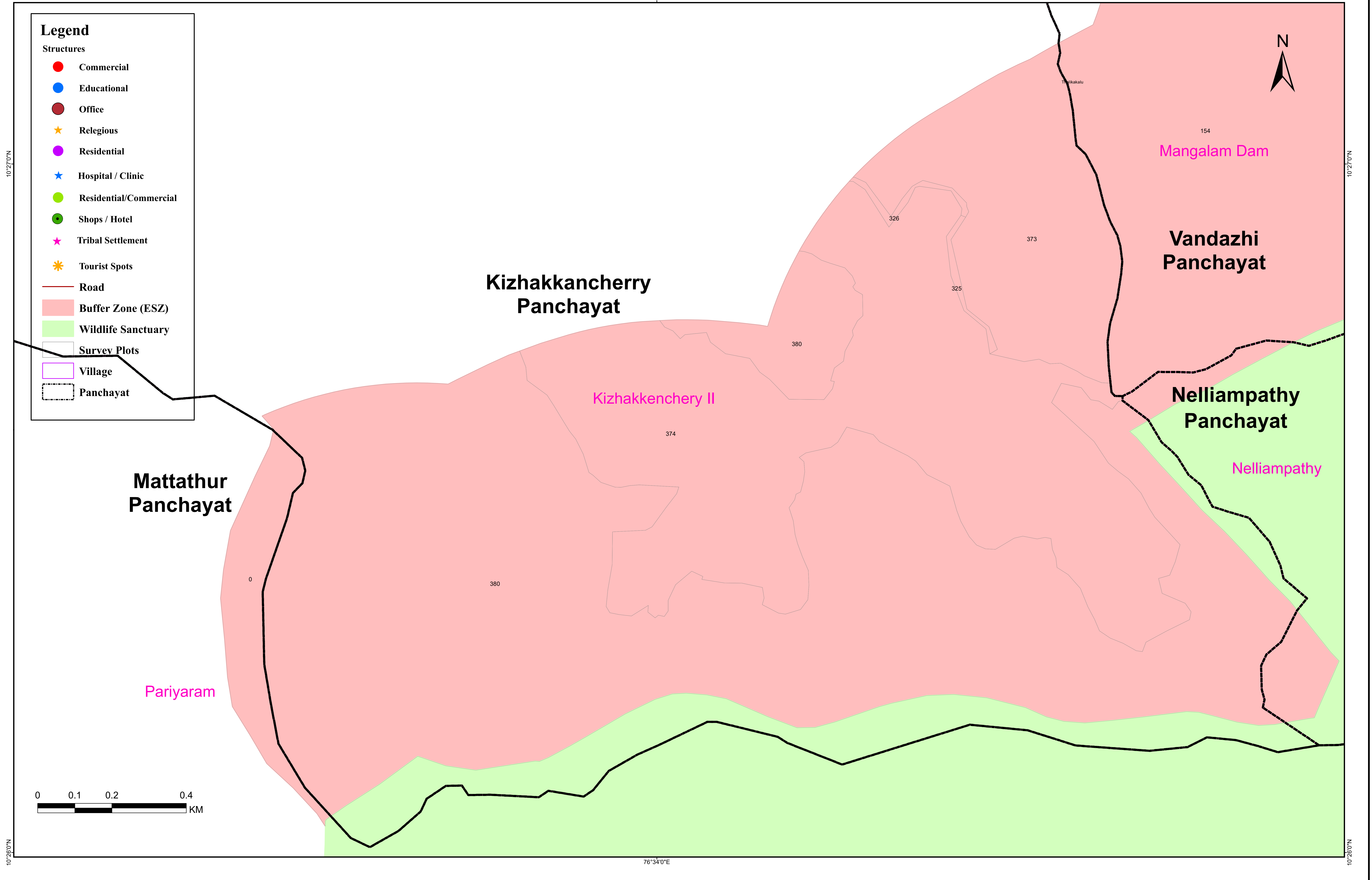
	52	584	Full
	52	585	Partial
Thiruvazhiyad	53	472	Partial
	53	473	Partial
	53	475	Partial
	53	476	Partial
	53	477	Full
	53	478	Full
	53	479	Full
	53	480	Full
	53	481	Full
	53	482	Full
	53	483	Full
	53	484	Full
	53	485	Partial
	53	486	Partial
	53	487	Partial
	53	488	Partial
	53	489	Full
	53	490	Full
	53	491	Full
	53	492	Full
	53	493	Full
	53	494	Full
	53	495	Full
	53	496	Full
	53	497	Full
	53	498	Full
	53	499	Full
	53	500	Full
	53	501	Partial
	53	510	Partial
	53	511	Full
	53	512	Partial
	53	513	Partial
	53	534	Partial
	53	535	Partial
	53	536	Full
	53	537	Full
	53	538	Partial
	53	539	Partial
	53	540	Full
	53	541	Full
	53	542	Full

	53	543	Full
	53	544	Full
	53	545	Full
	53	546	Full
	53	547	Full
	53	548	Full
	53	549	Full
	53	550	Full
	53	551	Full
	53	552	Full
	53	553	Full
	53	554	Full
	53	555	Full
	53	556	Full
	53	557	Full
	53	558	Full
	53	559	Full
	53	560	Full
	53	561	Full
	53	562	Full
	53	563	Full
	53	564	Full
	53	565	Full
	53	566	Full
	53	567	Full
	53	568	Full
	53	569	Full
	53	569	Full
	53	570	Partial

# PARAMBIKULAM WILD LIFE SANCTUARY

## SUBSITING STRUCTURES - KIZHAKANCHERY PANCHAYAT

76°34'0"E

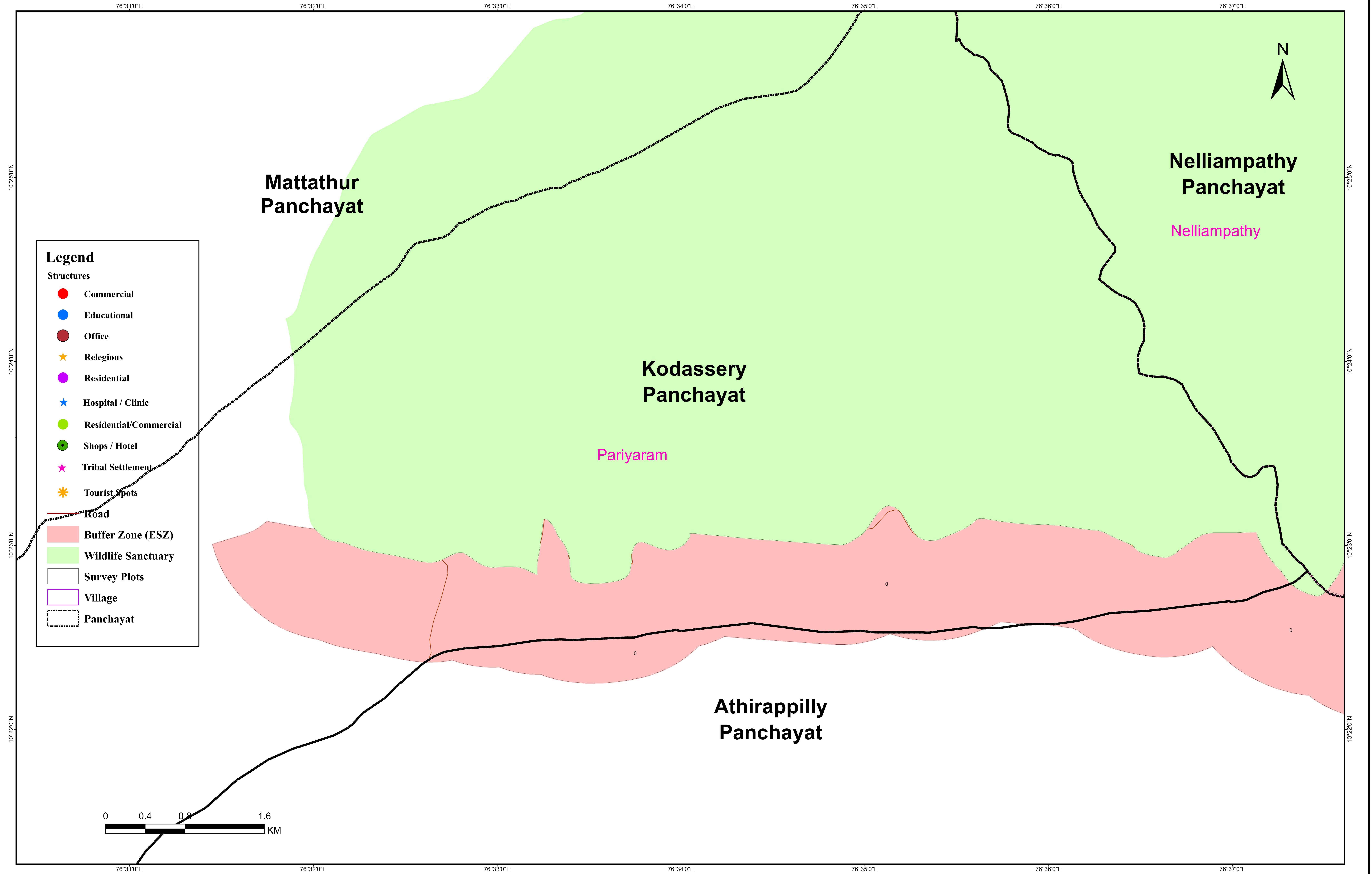


**Survey Plots within the ESZ of Parambikulam WLS-  
Palakkad District, Alathur Taluk, Kizhakkancherry Panchayat**

<b>Village</b>	<b>Block No</b>	<b>Survey Plots</b>	<b>Plots falls in ESZ</b>
Kizhakkenchery II	39	325	Full
	39	326	Partial
	39	373	Partial
	39	374	Partial
	39	380	Partial

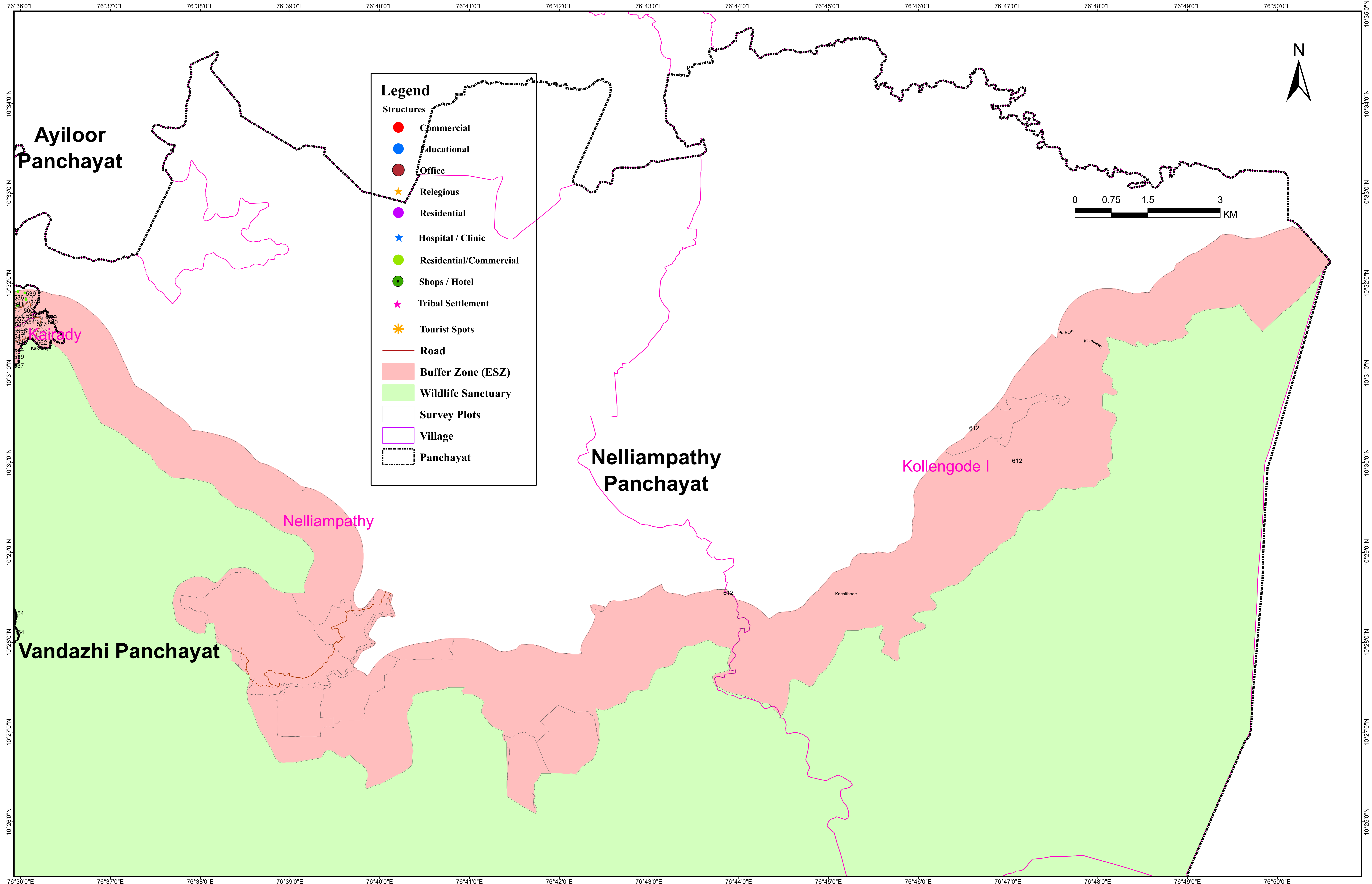
# PARAMBIKULAM WILD LIFE SANCTUARY

## SUBSISTING STRUCTURES - KODASSERY PANCHAYAT



# PARAMBIKULAM WILD LIFE SANCTUARY

## SUBSISTING STRUCTURES - NELLIYAMPATHY PANCHAYAT

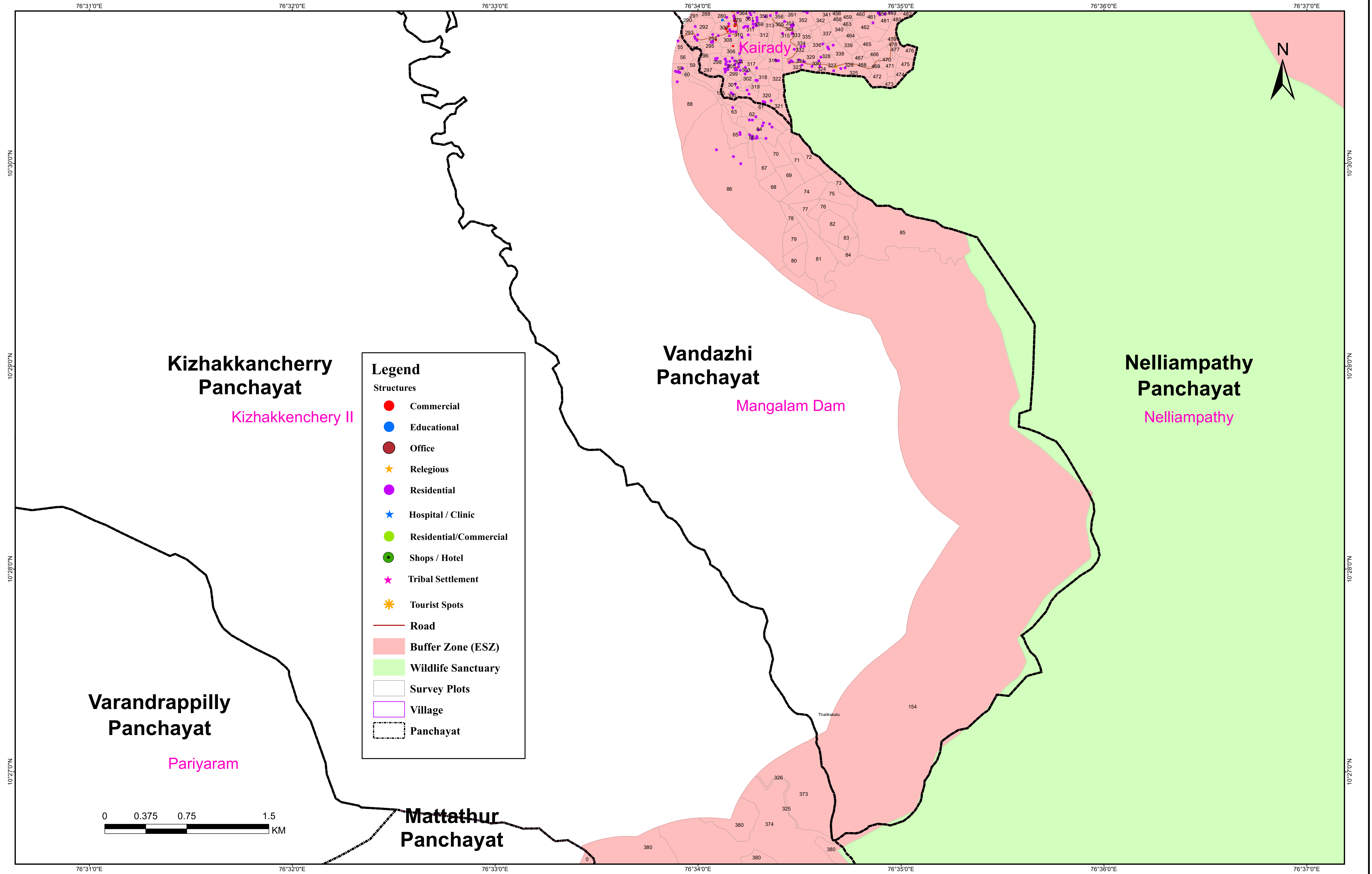


**Survey Plots within the ESZ of Parambikulam WLS-  
Palakkad District, Chittur Taluk, Nelliampathy Panchayat**

<b>Village</b>	<b>Block No</b>	<b>Survey Plots</b>	<b>Plots falls in ESZ</b>
Kollengode I	13	612	Partial
Nelliampathy	57	Forest / NA	Full

# PARAMBIKULAM WILD LIFE SANCTUARY

## SUBSISTING STRUCTURES - KIZHANCHERY PANCHAYAT



**Legend**

**Structures**

- Commercial
- Educational
- Office
- ★ Religious
- Residential
- ★ Hospital / Clinic
- Residential/Commercial
- Shops / Hotel
- ★ Tribal Settlement
- ★ Tourist Spots

**Other Features**

- Road
- Buffer Zone (ESZ)
- Wildlife Sanctuary
- Survey Plots
- Village
- Panchayat

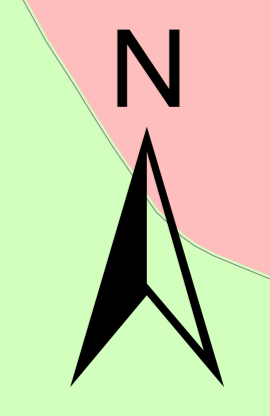
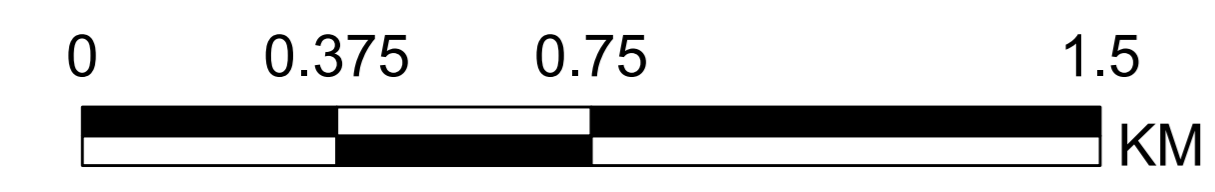
**Kizhakkancherry Panchayat**  
Kizhakkenchery II

**Vandazhi Panchayat**  
Mangalam Dam

**Nelliampathy Panchayat**  
Nelliampathy

**Varandrappilly Panchayat**  
Pariyaram

**Mattathur Panchayat**



76°31'0"E 76°32'0"E 76°33'0"E 76°34'0"E 76°35'0"E 76°36'0"E 76°37'0"E

10°30'0"N 10°29'0"N 10°28'0"N 10°27'0"N

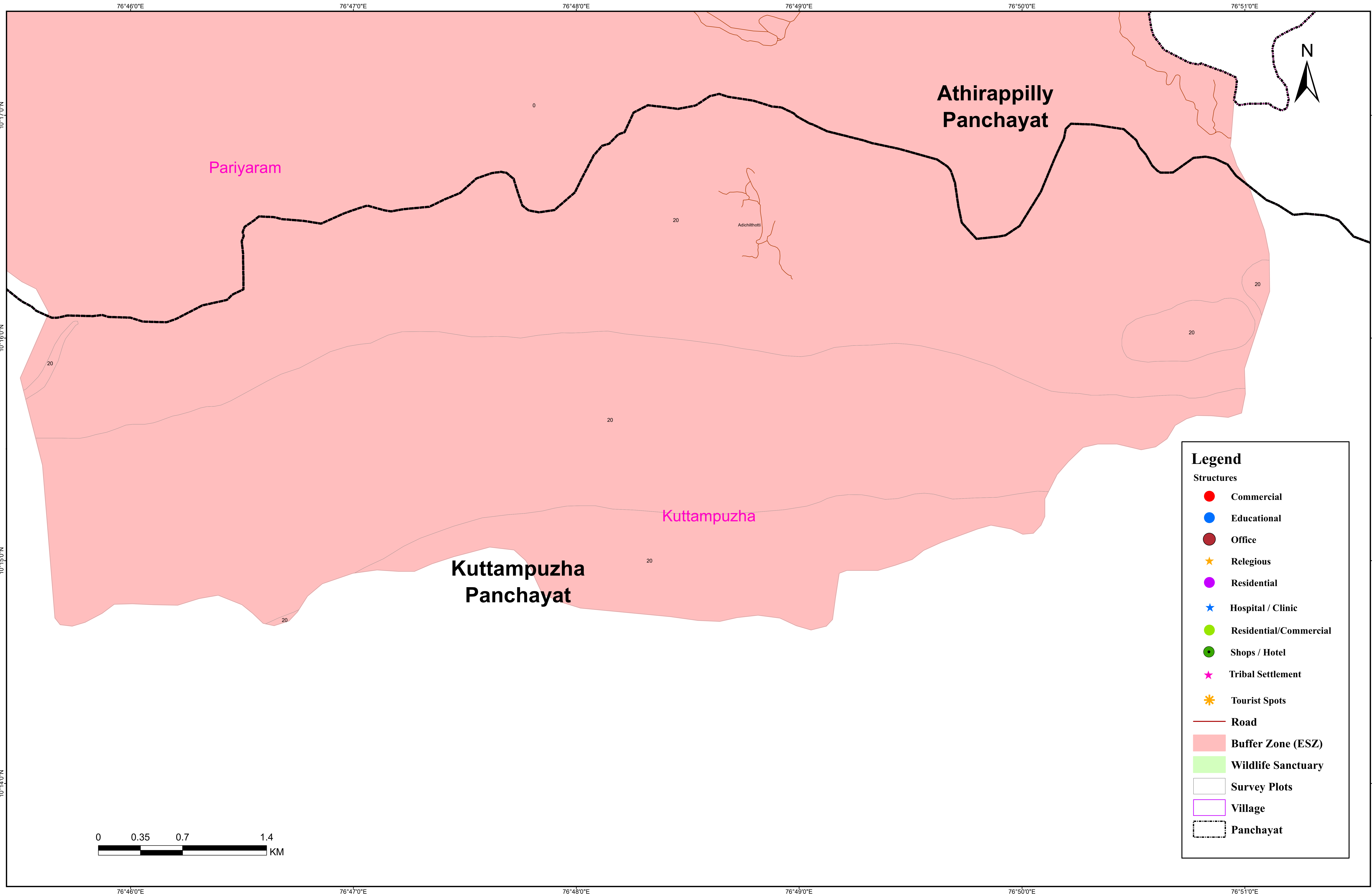


**Survey Plots within the ESZ of Parambikulam WLS-  
Palakkad District, Alathur Taluk, Vandazhi Panchayat**

<b>Village</b>	<b>Block No</b>	<b>Survey Plots</b>	<b>Plots falls in ESZ</b>
Mangalam Dam	50	55	Partial
	50	56	Partial
	50	58	Partial
	50	59	Full
	50	60	Full
	50	61	Full
	50	62	Full
	50	63	Full
	50	64	Full
	50	65	Full
	50	66	Full
	50	67	Full
	50	68	Full
	50	69	Full
	50	70	Full
	50	71	Full
	50	72	Full
	50	73	Full
	50	74	Full
	50	75	Full
	50	76	Full
	50	77	Full
	50	78	Full
	50	79	Full
	50	80	Full
	50	81	Full
	50	82	Full
	50	83	Full
	50	84	Full
	50	85	Full
	50	86	Partial
	50	88	Partial
	50	154	Partial
	50	155	Partial

# PARAMBIKULAM WILD LIFE SANCTUARY

## SUBSISTING STRUCTURES - KUTTAMPUZHA PANCHAYAT



**Legend**

**Structures**

- Commercial
- Educational
- Office
- ★ Religious
- Residential
- ★ Hospital / Clinic
- Residential/Commercial
- Shops / Hotel
- ★ Tribal Settlement
- ✱ Tourist Spots

**Other Features**

- Road
- Buffer Zone (ESZ)
- Wildlife Sanctuary
- Survey Plots
- Village
- Panchayat



76°46'0"E      76°47'0"E      76°48'0"E      76°49'0"E      76°50'0"E      76°51'0"E

10°17'0"N

10°16'0"N

10°15'0"N

10°14'0"N

76°46'0"E      76°47'0"E      76°48'0"E      76°49'0"E      76°50'0"E      76°51'0"E

**Survey Plots within the ESZ of Parambikulam WLS-  
Ernakulam District, Kothamangalam Taluk, Kuttampuzha Panchayat**

<b>Village</b>	<b>Block No</b>	<b>Survey Plots</b>	<b>Plots falls in ESZ</b>
Kuttampuzha	1	20	Partial